

FOR SALE



Lot 1567 Jardine Rd, Providence Estate South Ripley

FULL TURN KEY PACKAGE

With nothing more to do, this full turn key package is waiting for you to move in.

At Desire Homes we offer top quality finishes through to well known brand name appliances.

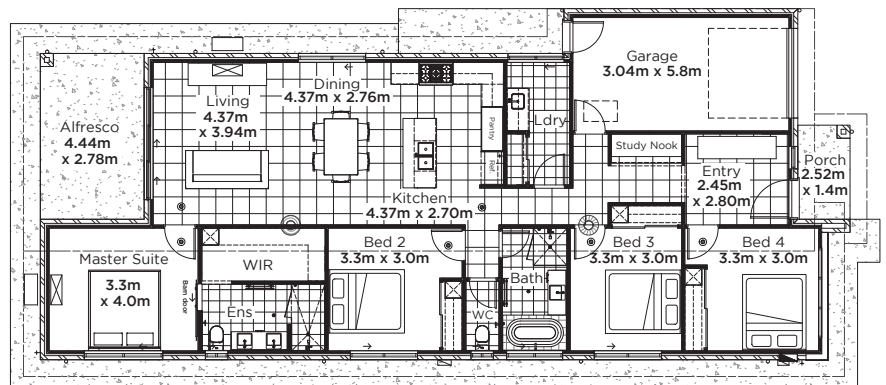
Rest assured, we leave no expense spared in making sure we offer you a home built to stand the test of time.

Deal directly with the builder knowing exactly what you will receive and when.

Price on Application

INCLUSIONS

- 180m² Brick Home
- 4 Bedrooms
- 1 Bathroom + Ensuite
- Study Nook
- Open Plan Living
- Air Conditioning
- Ceiling Fans Throughout
- 90cm Freestanding Cooker
- Dishwasher
- Stone Bench Tops Throughout
- 2550mm Ceiling Height
- Designer Fixtures and Fittings
- Single Car Garage
- Security Screens
- Window Coverings
- Alarm System
- NBN Connection Point
- Gas Instant Hot Water
- Fully Fenced 315m² block
- Complete with Landscaping



The Barron 180m²

Exterior Length - 21.68m Exterior Width - 9.4m

Copyright Desire Homes Pty Ltd



3556 8488

[desirehomes.com.au](https://www.desirehomes.com.au)



QBCC Licence No: 15012231

FULL TURN KEY PACKAGES | CUSTOM PLAN CONTRACT HOMES

*Subject to developer design approval. Copyright Desire Homes Pty Ltd ABN 84 605 649 741. All photos and illustrations are representative only. All designs are the property of Desire Homes Pty Ltd and must not be used, reproduced, copied or varied wholly or in part. +Minimum width specified requires zero allotment. Subject to local authority zoning requirements.