



# The Bloomfield 263

BUILDING YOUR DREAM

Suitable for blocks **16m+** wide | Price on Application |



Desire Homes specialise in Full Turn Key Packages and Custom Plan Contract Homes throughout South East Queensland.

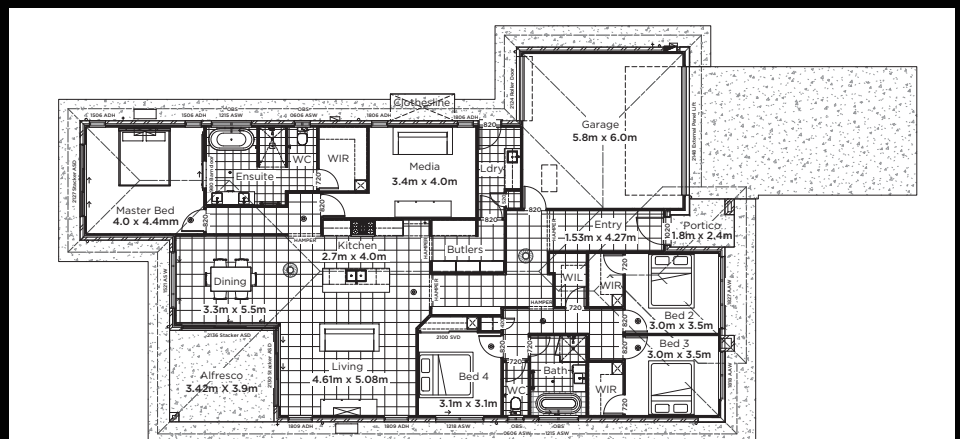
Choose from one of our Full Turn Key Packages including quality finishes and appliances with nothing for you to do, but move in.

If you have your own block we can work with you to build from custom plans or we can build one of our designs to suit your specific lifestyle.

At Desire Homes we only handover a home that we would live in ourselves. That's what sets us apart from the rest.

## INCLUSIONS

- 263m<sup>2</sup> Brick Home
- 4 Bedrooms + Media Room
- 1 Bathroom + Ensuite with Freestanding Bath
- Air Conditioning
- Ceiling Fans Throughout
- 90cm Freestanding Cooker
- Dishwasher
- Stone Bench Tops
- Quality Fittings
- Double Car Garage
- Rear Access Through Garage
- Security Screens
- Window Coverings
- Alarm System
- NBN Connection Point
- Gas Instant Hot Water
- Fully Fenced
- Complete with Landscaping



**The Bloomfield 263m<sup>2</sup>** Exterior Length - 24.45m Exterior Width - 14m

Copyright Desire Homes Pty Ltd



**DESIRE HOMES**  
QLD  
BUILDING YOUR DREAM

**3556 8488**

[desirehomes.com.au](https://www.desirehomes.com.au)



QBCC Licence No: 15012231

FULL TURN KEY PACKAGES | CUSTOM PLAN CONTRACT HOMES