

FOR SALE



Lot 969 Barrams Rd, South Ripley

FULL TURN KEY PACKAGE

With nothing more to do, this full turn key package is waiting for you to move in.

At Desire Homes we offer top quality finishes through to well known brand name appliances.

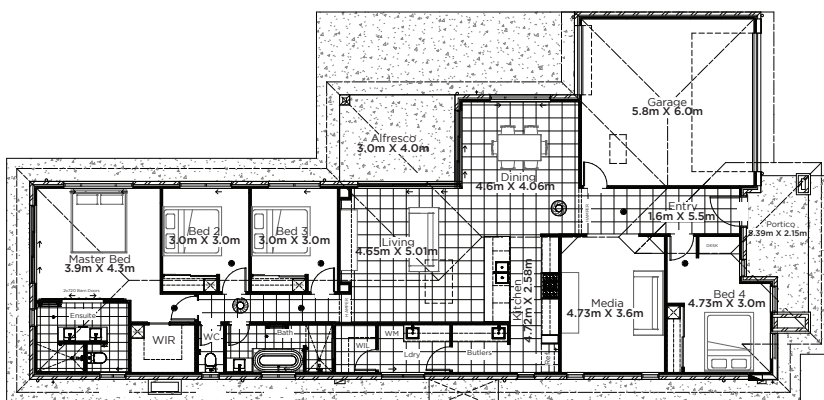
Rest assured, we leave no expense spared in making sure we offer you a home built to stand the test of time.

Deal directly with the builder knowing exactly what you will receive and when.

Price on Application

INCLUSIONS

- Large 240m² Brick Home
- 4 Bedrooms + Media Room
- 1 Bathroom + Ensuite
- Study Nook
- Open Plan Living
- Ducted Air Conditioning
- Ceiling Fans Throughout
- 90cm Freestanding Cooker
- Dishwasher
- Stone Bench Tops Throughout
- Butlers Pantry
- Designer Fixtures and Fittings
- 2550mm Ceiling Height
- Double Car Garage
- Rear Access Through Garage
- Security Screens
- Window Coverings
- Alarm System
- NBN Connection Point and Hub
- Gas Instant Hot Water
- Fully Fenced 448m² block
- Complete with Landscaping



The Jardine 240m²

Copyright Desire Homes Pty Ltd

Exterior Length - 26.99m Exterior Width - 12.73m



DESIRE HOMES
QLD
BUILDING YOUR DREAM

3556 8488

desirehomes.com.au



QBCC Licence No: 15012231

FULL TURN KEY PACKAGES | CUSTOM PLAN CONTRACT HOMES

*Subject to developer design approval. Copyright Desire Homes Pty Ltd ABN 84 605 649 741. All photos and illustrations are representative only. All designs are the property of Desire Homes Pty Ltd and must not be used, reproduced, copied or varied wholly or in part. +Minimum width specified requires zero allotment. Subject to local authority zoning requirements.